

IDM elective courses for CE-students

Integral Design & Management (IDM) Electives for all MSc Civil Engineering students

Academic year 2019/2020

Note: the selection of IDM electives must be approved in advance by the IDM-coordinator (dr. v. Nederveen).

Code	Name	ECTS	Quarter
CIE4381	Engineering Asset Mngt.	4	Q1
CIE4391	Integral Asset Planning	4	Q2
CIE4481	Systems Engineering Mngt.	4	Q2
CIE4120	Information Systems for Construction	4	Q1
CIE4170	Construction Technology	4	Q2
EPA1323	Introduction to TPM Modelling	5	Q2
IN4170	Databases and Datamining	6	Q1-Q2
WI4051	Introduction to Operation Research	6	Q1-Q2
CMExxxx	Other financial or management courses	5	Q1-Q4
EPAxxxx	Other system modelling courses	5	Q1-Q4
WI/INxx	Other risk or information courses	5	Q1-Q4
CIE4100 ¹	Materials and Ecological Engineering	4	Q3
CIE4130 ¹	Probabilistic Design	4	Q2
CIE4395 ¹	Risk and Variability in GeoEngineering	4	Q4
CIE4491 ¹	Urban Drainage and Watermanagement	4	Q1
CIE5830 ¹	Freight Transportation Systems	5	Q3
CIE5981 ¹	Forms of Collaboration in Civil Engineering	4	Q1

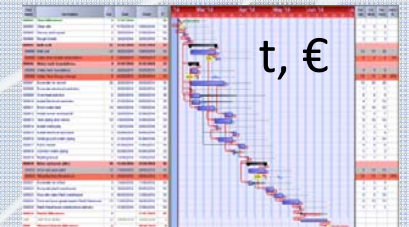
¹ Students may use one 4 ECTS course out of their MSc-track program as an IDM annotation fulfilment elective. (i.e., one extra course out has to be chosen out of the list above, where CIE 4381 and 4481 are excluded, since these are already mandatory for the IDM Annotation)



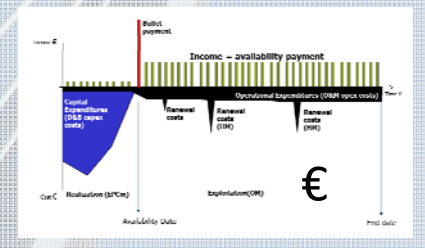
Information
Organization
Systems



Logistics
Scheduling
Budget



Contract
Finance
Risk



CIE 4381	Engineering Asset Management	Q1
CIE 4391	Integral Asset Planning	Q2
CIE 4481	Systems Engineering Management	Q2
CIE 4120	Information Systems for Construction	Q1
CIE 4130	Probabilistic Design	Q2
CIE 4170	Construction Technology of CE Structures	Q2

What to do?

In order to obtain the IDM annotation you must do three things within your elective space:

- I. Two mandatory IDM courses (combined 8 ECTS) and a minimum of 6 ECTS elective courses out of a IDM list (see last page). One 4 ECTS course from your compulsory MSc-track may be used for the 6 ECTS IDM elective space (this course is indicated with an ¹ in the table on the last page).
- II. The multidisciplinary project CIE4061 or an Internship CIE 4040 of 10 ECTS with an 'IDM flavour' (80/20 engineering domain vs. IDM criteria).
- III. The MSc graduation thesis in your specialization domain, with an 'IDM flavour' (ratio of specialization domain vs. IDM to be determined by the graduation committee, which is a combination of members your domain and IDM staff).

More info

www.tudelft.nl/citg/IDMannotation

Questions?

Contact the IDM-coordinator: Dr. G.A. van Nederveen (g.a.vannederveen@tudelft.nl) or contact an IDM professor Prof.dr.ir. A.R.M. Wolfert (r.wolfert@tudelft.nl)

I - A number of mandatory IDM courses - 14 ECTS

- 8 ECTS mandatory IDM courses: CIE4381 (Engineering Asset Management) and CIE4481 (System Engineering Management)
- Minimal 6 ECTS elective courses¹ from the IDM-list, selection to be approved by the IDM coordinator at the start, see next page.

II - An IDM multidisciplinary project or Internship - 10 ECTS

10 ECTS Multidisciplinary project CIE4061 or Internship CIE 4040 with a specific IDM evaluation. You define IDM-objectives at the start, together with the IDM coordinator (at least 20% of the work). At the end of the project, these IDM objective are also used in the course evaluation. BE students should apply these IDM criteria to the AR0026 MEGA course.

III – MSc Graduation thesis with IDM part

MSc graduation project: you define an IDM-objective at the start of the project, together with an IDM professor. At the end of the project, the IDM objective is used in the project evaluation. The graduation committee chair is either an IDM professor or a professor of the engineering track/specialisation. In the first case, there is at least one lecturer from the engineering track/specialisation in the committee. In the second case, there is at least one IDM lecturer in the committee.

¹ Students may already use one 4 ECTS course out of their MSc-track program as an IDM elective, see the last page.