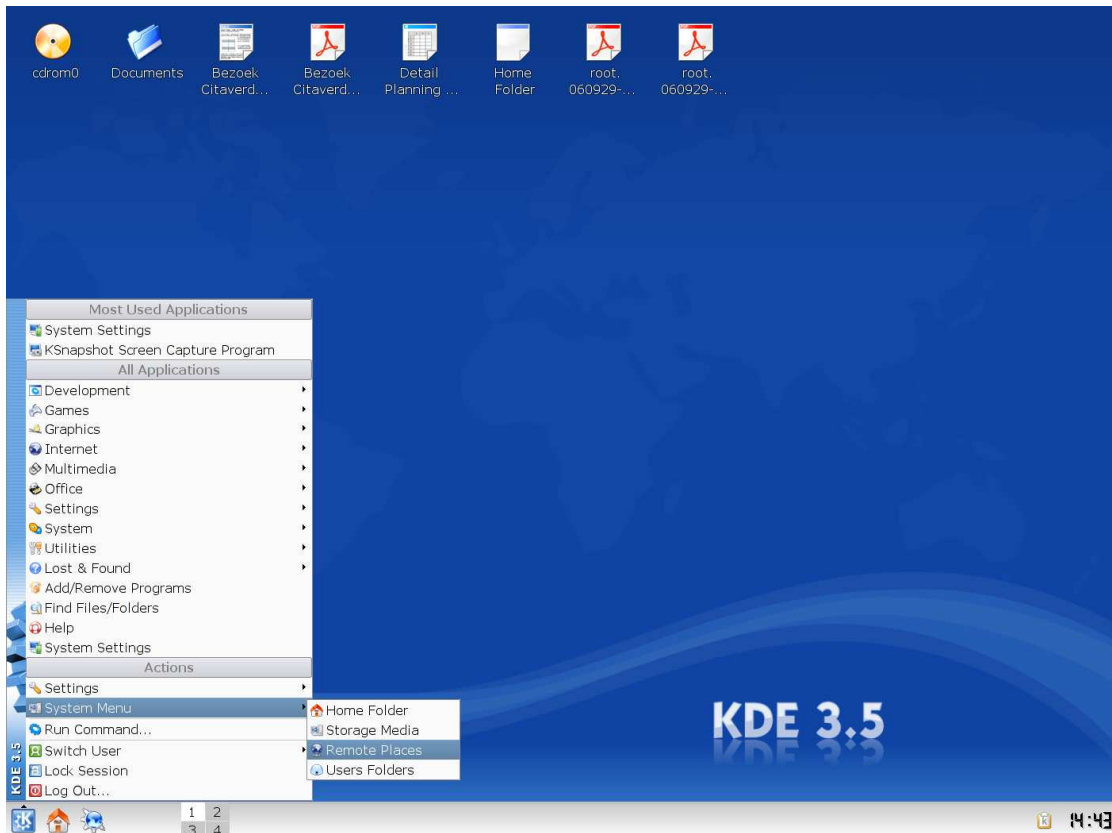


USER INSTRUCTION SHEET

Configuration Webdav for KDE - Konqueror

This instruction sheet explains how to connect to TU Delft webdata using KDE - Konqueror.

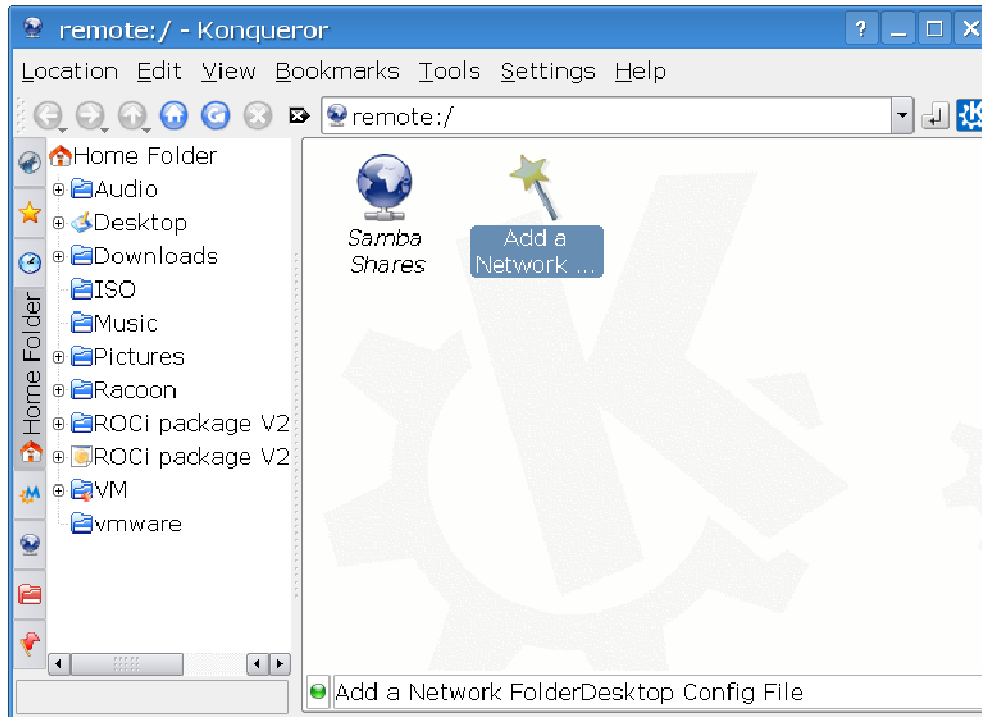
Open "System Menu" > "Network Places" in your Kicker Menu.



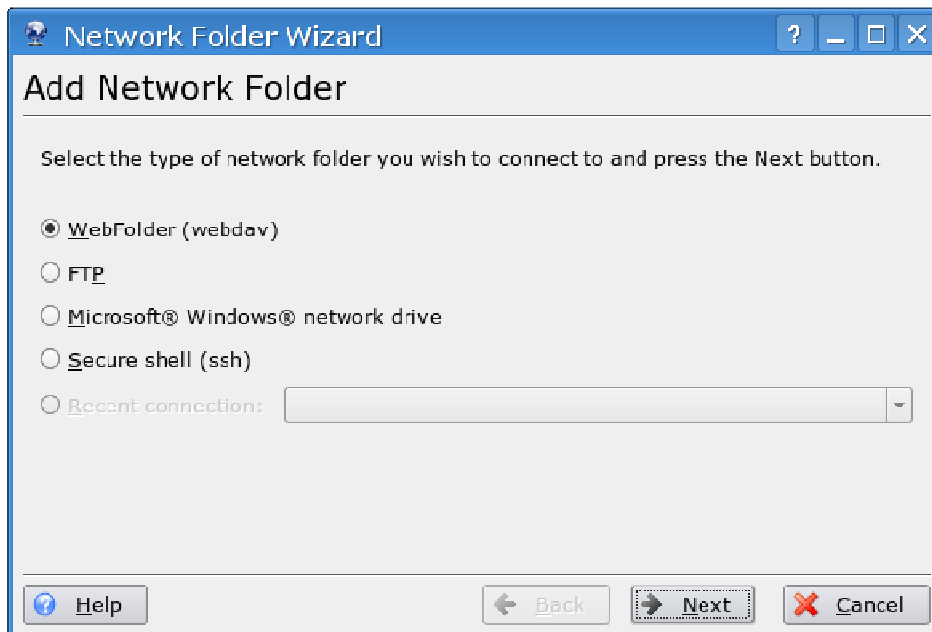
USER INSTRUCTION SHEET

Configuration Webdav for KDE - Konqueror

Select "Add a Network Place"



Select WebFolder (webdav) and press Next



USER INSTRUCTION SHEET

Configuration Webdav for KDE - Konqueror

Network Folder Wizard

Network Folder Information

Enter a name for this *WebFolder* as well as a server address, port and folder path to use and press the **Save & Connect** button.

Name:

User:

Server:

Port:

Folder:

Create an icon for this remote folder

Use encryption

Fill in the Following Data

Name: A descriptive name for the webfolder

User: Your NetID username

Server: webdata.tudelft.nl

Port: You may leave this blank it will be filled in automatically.

Folder: Either staff-homes or student-homes

The icon checkbox is already checked for you.

You MUST check the "Use encryption" checkbox.

Press "Save & Connect."

USER INSTRUCTION SHEET

Configuration Webdav for KDE - Konqueror

Your webfolder is now stored under "System Menu" > "Network Places"

