

BitLocker external hard disk

For use by: Students, Employees
Version: 1.1
Date: 26-11-2018
Owner: ICT

(this page was intentionally left blank)

BitLocker on an external hard disk

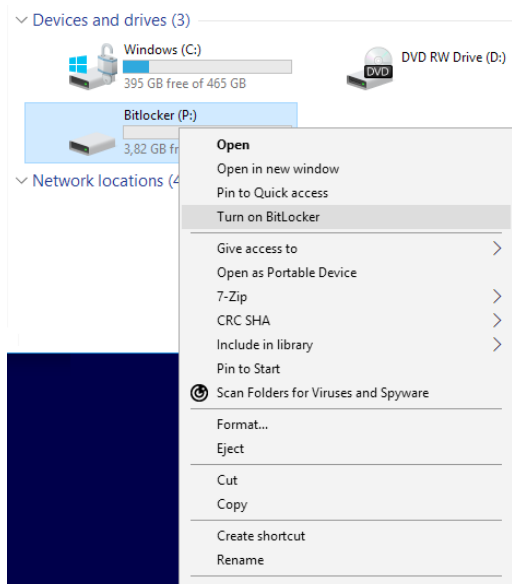
Before you begin

In this manual you can find the instructions to use BitLocker to protect your data on an external hard disk against theft. It is convenient if you have a USB-stick during the configuration.

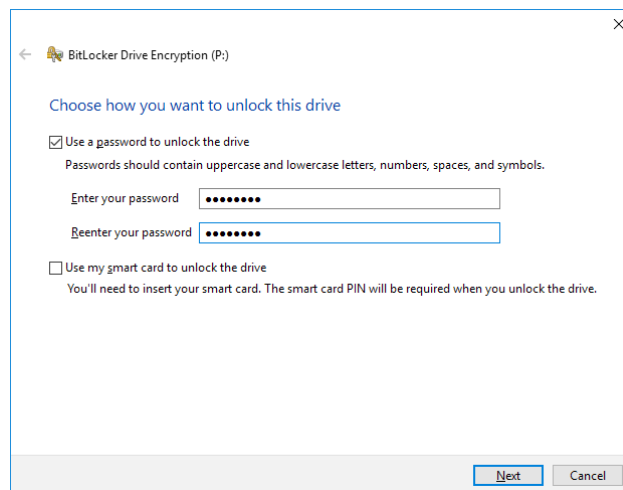
Securing our digital data is high on the agenda of the TU Delft. One of the most effective and user-friendly ways to do this, is by applying encryption on workstations (laptop/desktop). It increases the security level of your workstation and it has minimal impact for end-users.

Workstations managed by the TU Delft will be encrypted using central management. If you want to encrypt your workstation that is not managed by the TU Delft, you can do this manually. Read this instruction manual carefully and make sure you save your recovery key in a secure place where you can obtain it any time (e.g. secure cloud application such as Surfdrive). Do not save it on your local disk!

Step 1. Connect the external hard disk to the computer. Use the right mouse button to click on the external hard disk in the Windows Explorer and choose for the option "Turn on BitLocker".

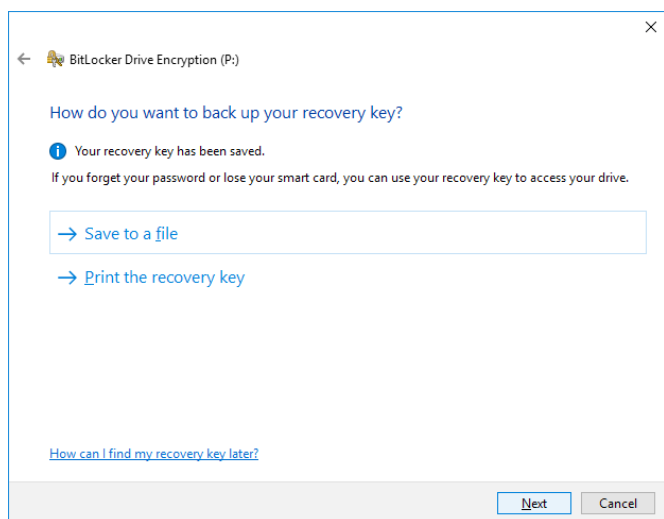


Step 2. The disk will be initialised, prior to creating a password to unlock the disk.



Step 3. Keep the recovery key in a safe place, like a USB-stick, or print it.

Using this recovery key, you are able to DECRYPT the data, without knowing the password.

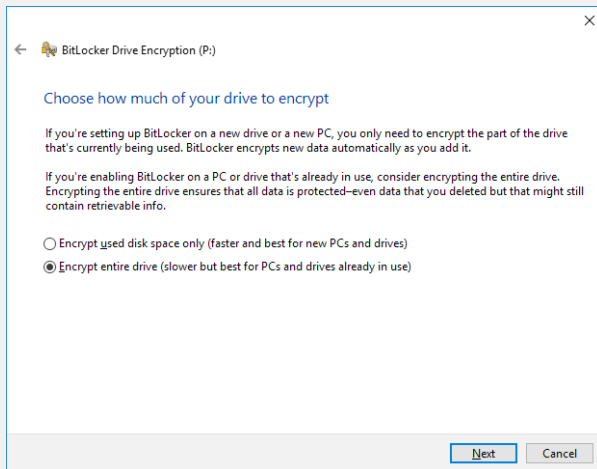


Step 4 is only necessary for Windows 10 users. Other users can continue with step 5.

Step 4 is only necessary for Windows 10 users

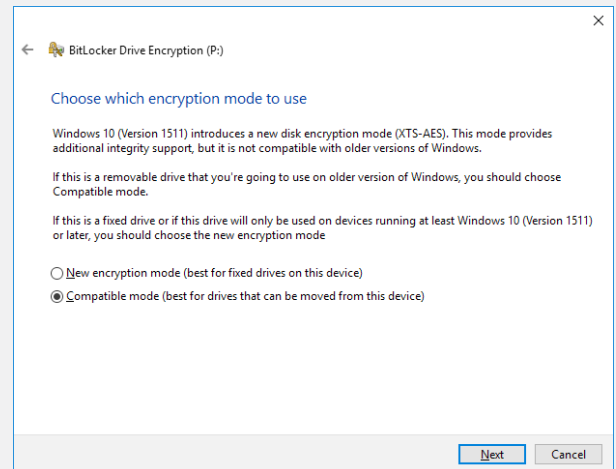
Step 4.1. Windows 10 will ask if it should encrypt the whole disk or only the used disk space.

Choose to encrypt the whole disk.



Step 4.2. When the disk will be used on Windows 7 systems, choose for the "Compatible mode".

If the disk only will be used on Windows 10 systems, "New encryption mode" will be a better option.



Step 5. The external hard disk is ready to be encrypted.

After removing the disk, every time that the disk will be connected to this (or another) Windows-system, there will be asked for the chosen password.

