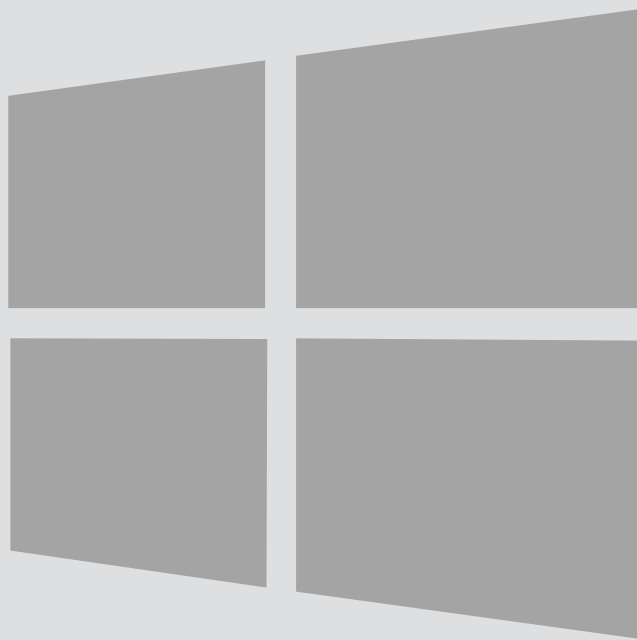


Windows 10



Windows 10

Eduroam
Wireless Connection



For use by:	Students and employees
Version:	1.0
Date:	25-08-2015
Owner:	SSC ICT

(this page was intentionally left blank)

Connecting wireless to the 'eduroam' network on Windows 10

Before you begin

The following instruction is supported by the TU Delft and has been tested to be working. However, we offer this manual to you as an extra service. So in case you have a configuration or version of Windows 10 other than the one described here and you have problems establishing a connection, neither ICT nor a Servicepoint will be able to help you to make a successful connection.

Prerequisites

In order to make a successful connection, make sure that all your wireless hardware is installed, switched on and managed by Windows and that you have the latest updates for Windows installed.

Wireless profile installation

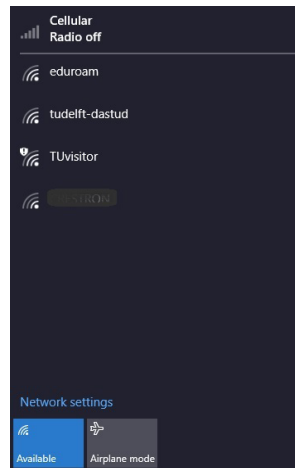
Step 1

Click on the network icon.



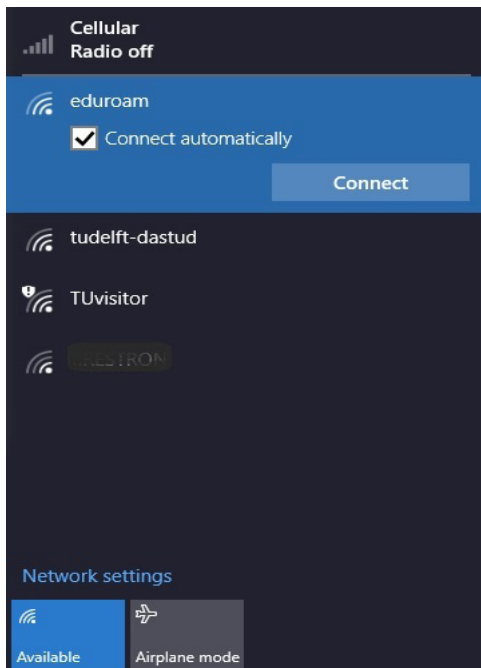
Step 2

The available connection will be shown.



Step 3

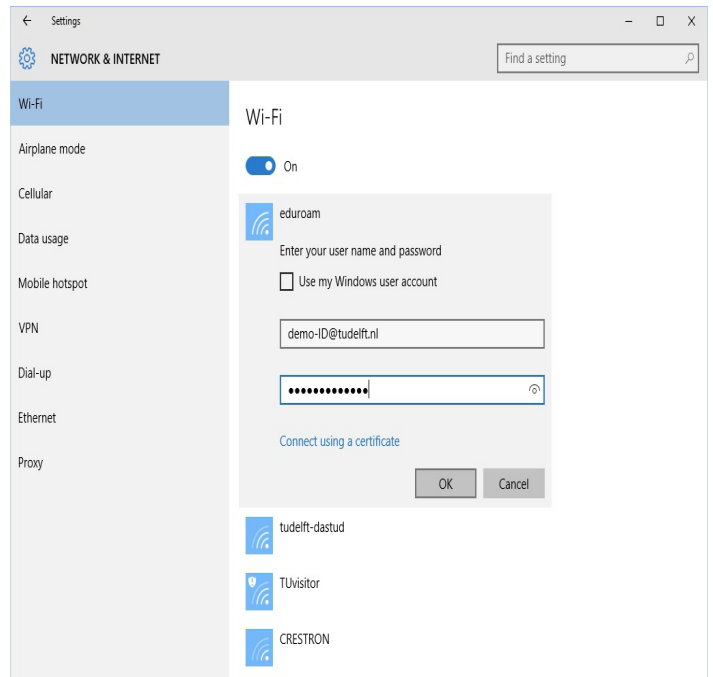
Click on **eduroam**.



Step 4

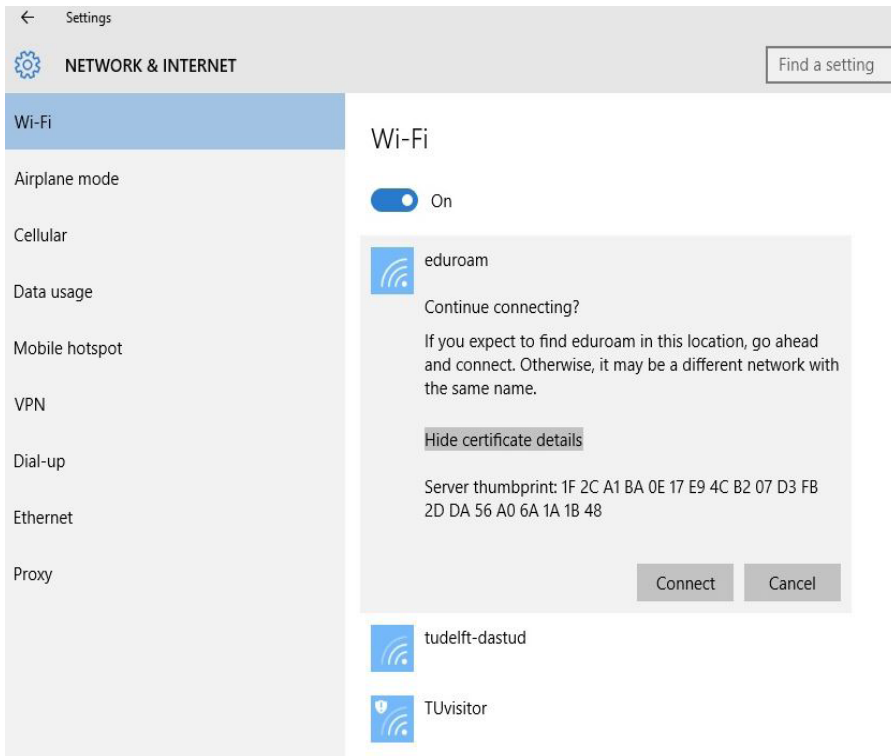
For both students and employees, enter your **netid@tudelft.nl** and your **netid password**.
*This may look like your email address but it is not.

Click OK.



Step 5

Click on **Connect** to confirm the certificate. If you first want to check the certificate, click on Show certificate details. Server thumbprint has to be the same!



Step 6

Connected!

